

THREE POLE MOULDED CASE CIRCUIT BREAKERS

Features

- In conformity with: IEC/EN 60947-2
- Wide range from (16 - 2500) A
- Compact dimensions, thus consumes less panel space

Selection and ordering data

Type KP 125-F (16 -125) A



Rated current at 40 °C A	No. of poles	Breaking capacity (Icu) kA at 415 V AC	Part No.	Weight Kg
16	3	25	KP 125-F 16A 3P	1.5
25	3	25	KP 125-F 25A 3P	
40	3	25	KP 125-F 40A 3P	
63	3	25	KP 125-F 63A 3P	
80	3	25	KP 125-F 80A 3P	
100	3	25	KP 125-F 100A 3P	
125	3	25	KP 125-F 125A 3P	

Type KP 250-F (160 - 250) A



160	3	35	KP 250-F 160A 3P	2.3
200	3	35	KP 250-F 200A 3P	
250	3	35	KP 250-F 250A 3P	

Type KP 800-F (300-630) A



300	3	50	KP 800-F 300A 3P	8
400	3	50	KP 800-F 400A 3P	
500	3	50	KP 800-F 500A 3P	
630	3	50	KP 800-F 630A 3P	

Type KP 800-F (800) A



800	3	50	KP 800-F 800A 3P	10
-----	---	----	-------------------------	----

THREE POLE MOULDED CASE CIRCUIT BREAKERS

Features

- In conformity with: IEC/EN 60947-2
- Wide range from (16 - 2500) A
- Compact dimensions, thus consumes less panel space

Selection and ordering data



Type KP 1250-F (1000 - 1250) A

1000	3	50	KP 1250-F 1000A 3P	18.5
1250	3	50	KP 1250-F 1250A 3P	



Type KP 1600-F (1600) A

1600	3	50	KP 1600-F 1600A 3P	27
------	---	----	---------------------------	----

6



Type KP 2500-F (2000-2500) A

2000	3	70	KP 2500-F 2000A 3P	54
2500	3	70	KP 2500-F 2500A 3P	

ELECTRICAL ACCESSORIES

Selection and ordering data

Type KP 125-F

Auxiliary contact



Voltage	Current Rating (In)	Config.	Part No.
250V AC 250V DC	5A 3A		KP BPKF1

Type KP 250-F

Auxiliary contact



Voltage	Current Rating (In)	Config.	Part No.
250V AC 250V DC	5A 3A		KP BPKF2

Type KP 800-F

Auxiliary contact



Voltage	Current Rating (In)	Config.	Part No.
250V AC 250V DC	5A 3A		KP BPKF3

Type KP 1250-F

Auxiliary contact



Voltage	Current Rating (In)	Config.	Part No.
250V AC 250V DC	5A 3A		KP BPKF4

Type KP 1600-F

Auxiliary contact



Voltage	Current Rating (In)	Config.	Part No.
250V AC 250V DC	5A 3A		KP BPKF5

Type KP 2500-F

Auxiliary contact



Voltage	Current Rating (In)	Config.	Part No.
250V AC 250V DC	5A 3A		KP BPKF6

6

ELECTRICAL ACCESSORIES

Selection and ordering data

Type KP 250-F

Under voltage release



Voltage AC	Voltage DC	Config.	Part No.
220-250V	220-250V	D1— <input type="checkbox"/> —D2	KP UF2

Type KP 800-F (300-630A)

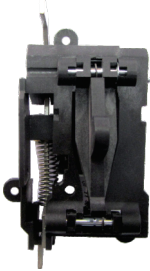
Under voltage release



Voltage AC	Voltage DC	Config.	Part No.
220-250V	220-250V	D1— <input type="checkbox"/> —D2	KP UF3

Type KP 800-F (800A)

Under voltage release

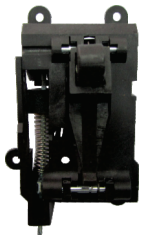


Voltage AC	Voltage DC	Config.	Part No.
220-250V	220-250V	D1— <input type="checkbox"/> —D2	KP UF4

6

Type KP 1250-F

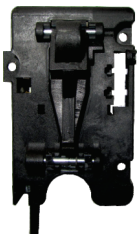
Under voltage release



Voltage AC	Voltage DC	Config.	Part No.
220-250V	220-250V	D1— <input type="checkbox"/> —D2	KP UF5

Type KP 1600-F

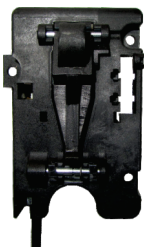
Under voltage release



Voltage AC	Voltage DC	Config.	Part No.
220-250V	220-250V	D1— <input type="checkbox"/> —D2	KP UF6

Type KP 2500-F

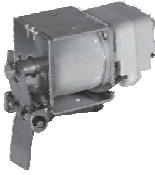
Under voltage release



Voltage AC	Voltage DC	Config.	Part No.
220-250V	220-250V	D1— <input type="checkbox"/> —D2	KP UF7

ELECTRICAL ACCESSORIES

Selection and ordering data



Type KP 125-F
Shunt trip release

Voltage AC	Voltage DC	Config.	Part No.
110-250V	110-250V	B1—□—B2	KP DF1



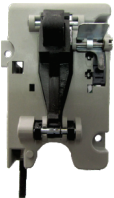
Type KP 250-F
Shunt trip release

Voltage AC	Voltage DC	Config.	Part No.
110-250V	110-250V	B1—□—B2	KP DF2



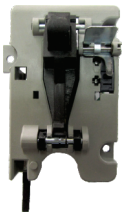
Type KP 800-F (300-630A)
Shunt trip release

Voltage AC	Voltage DC	Config.	Part No.
110-250V	110-250V	B1—□—B2	KP DF3



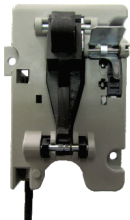
Type KP 800-F (800A)
Shunt trip release

Voltage AC	Voltage DC	Config.	Part No.
110-250V	110-250V	B1—□—B2	KP DF4



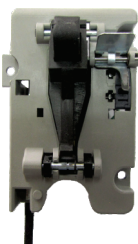
Type KP 1250-F
Shunt trip release

Voltage AC	Voltage DC	Config.	Part No.
110-250V	110-250V	B1—□—B2	KP DF5



Type KP 1600-F
Shunt trip release

Voltage AC	Voltage DC	Config.	Part No.
110-250V	110-250V	B1—□—B2	KP DF6



Type KP 2500-F
Shunt trip release

Voltage AC	Voltage DC	Config.	Part No.
110-250V	110-250V	B1—□—B2	KP DF7

6

ELECTRICAL ACCESSORIES

Selection and ordering data

Type from KP 800-F to KP-1600



Motor Control Mechanisms

Voltage AC	Power	Opening time	Closing time	Part No.
220V	100W	4s	3.5s	KP MCMF2

Type KP 2500-F



Motor Control Mechanisms

Voltage AC	Power	Opening time	Closing time	Part No.
220V	500W	1.5s	1.5s	KP MCMF3

6

TECHNICAL DATA

TYPE CIRCUIT BREAKERS		KP 125-F	KP 250-F	KP 800-F	KP 1250-F	KP 1600-F	KP 2500-F	
Standard conformity		IEC/EN 60947-2						
No. of poles		3P	3P	3P	3P	3P	3P	
Standard current range/ratings	In	A	16, 80, 100, 125	160, 200, 250	300, 400, 500, 630, 800	1000, 1250	1600, 2000, 2500	
Rated operational voltage	Ue~	V	415	415	415	415	415	
Rated operational voltage	Ue=	V	250	250	250			
Rated insulation voltage	Ui~	V	750	750	750	750	750	
Rated impulse withstand	U _{imp}	kV	8	8	8	8	8	
Category of use			A	A	A	A	A	
Degree of protection: Standard appliance with terminal shields Appliance in enclosure with front plate			IP 30 IP 40			IP 00 IP 40		
Pollution degree			III					
Ambient temperature		°C	-25 to +60			-5 to +10		
Ultimate breaking capacity I _{cu} *	230/240 V ~	kA	35	65	70	80	80	125
	400/415 V ~	kA	25	35	50	50	50	70
	440 V ~	kA	20	25	40	35	40	50
	480/500 V ~	kA	12	18	35	25	25	42
	690 V ~	kA	8	12	25	18	20	25
	250 V -	kA	15	22	22	-	-	-
Standard breaking capacity I _{cs} (%I _{cu})*			75	100	50	50	50	50
Rated closing capacity on short-circuit (415 V~)			52	105	105 ⁷⁴ (for 800A)	105	105	105
Endurance (o.c. cycle)	mechanical		≥15 000	≥15 000	≥15 000	≥15 000	≥15 000	≥15 000
	electrical		3 000	3 000	3 000	3 000	3 000	3 000
Type of protection								
Thermal adjustable			(0,8 - 1)In	(0,7 - 1)In	(0,7 - 1)In	(0,4 - 1)In	(0,4 - 1)In	(0,4 - 1)In
Magnetic fixed	10xIn for 125 A		10xIn for 250 A(*)	-	-	-	-	
	10xIn for 100 A		10xIn for 200 A(*)	-	-	-	-	
	10xIn for 80 A		10xIn for 160 A(*)	-	-	-	-	
	10xIn for 16 A		-	-	-	-	-	
	-		-	-	-	-	-	
	-		-	-	-	-	-	
Magnetic adjustable			-	(5 - 10)In(*)	^{(5 - 10)In} (5 - 8)In-for 800A	(2 - 10)In	(2 - 10)In	(2 - 10)In

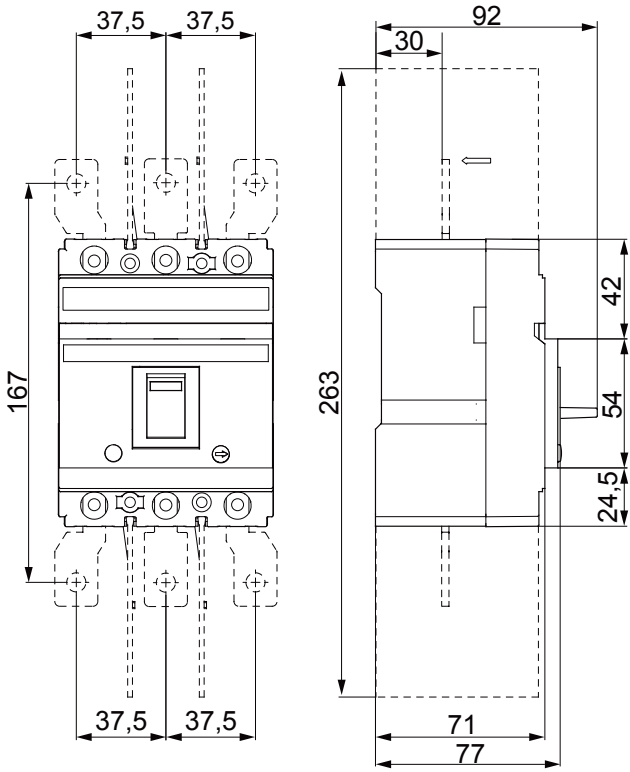
* The LINE side is the upper side. LOAD is to be connected on the down side. (*) On request for KP 250-F magnetic can be fixed or adjustable.

OTHER CHARACTERISTICS

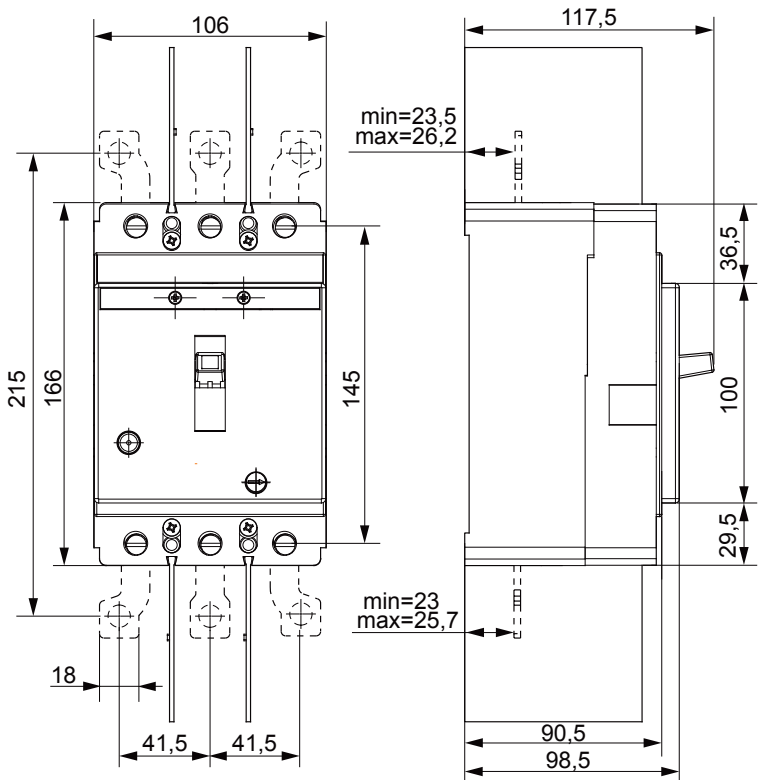
Connection cross-sections

Head devices KP	Max. Width on term. (mm)	Connection via terminal (mm ²)				Connection via bars (mm)	Connection via cage terminals (mm ²)	
		copper cable	aluminium cable	Cable shoe	Terminal screw		rigid cable	flexible cable
125-F						-	50	
250-F						-	120	
800-F						2x(40x5)	-	
1600-F	1000					2x(45x8)	-	
	1250					2x(45x8)	-	
	1600					45x20	-	
2500-F						2x(80x10)	-	

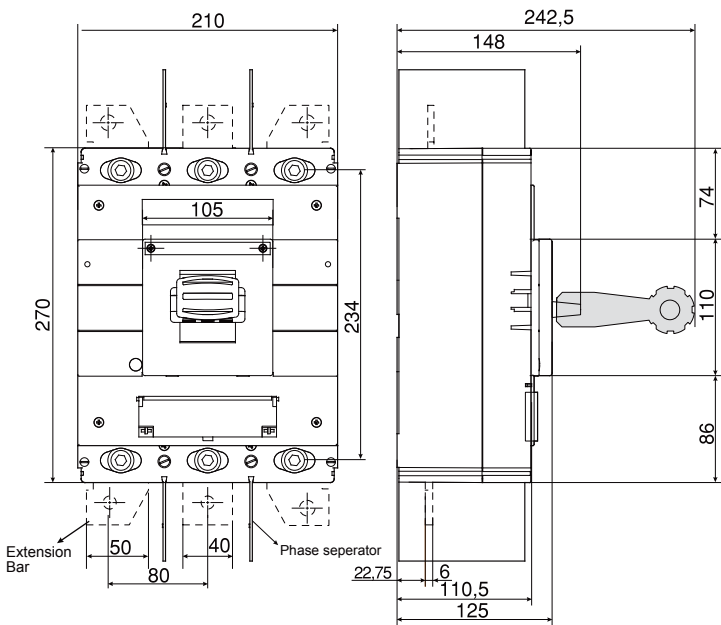
DIMENSIONAL DRAWINGS (mm)



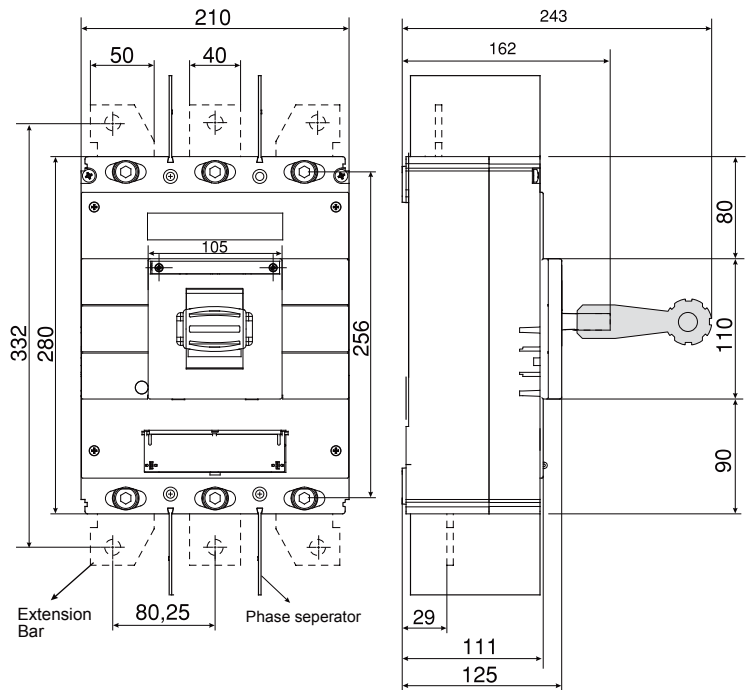
**KP 125-F
KP 160-F**



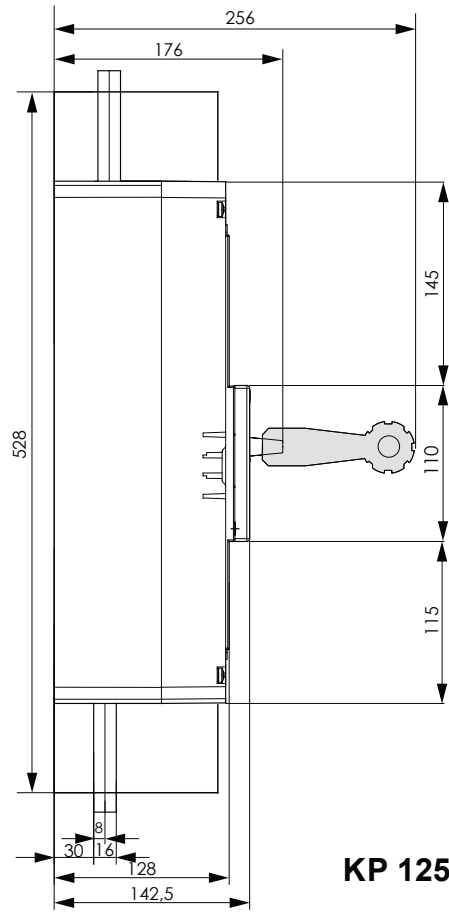
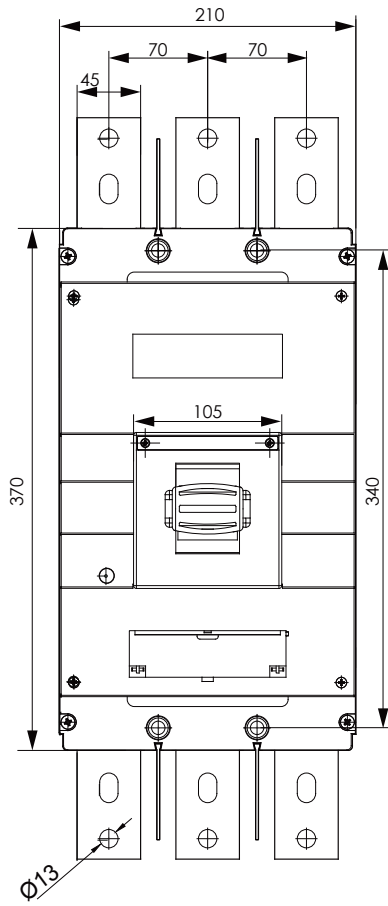
KP 250-F



KP 800-F(300-630A)

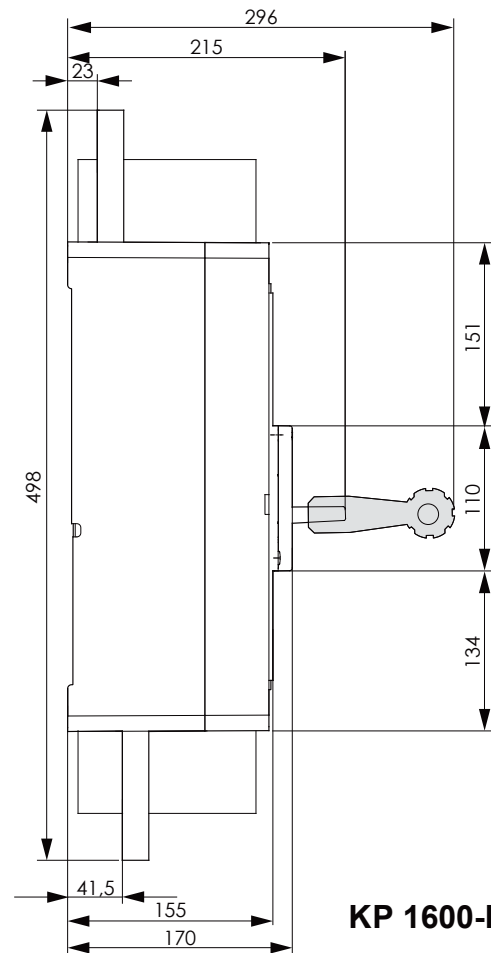
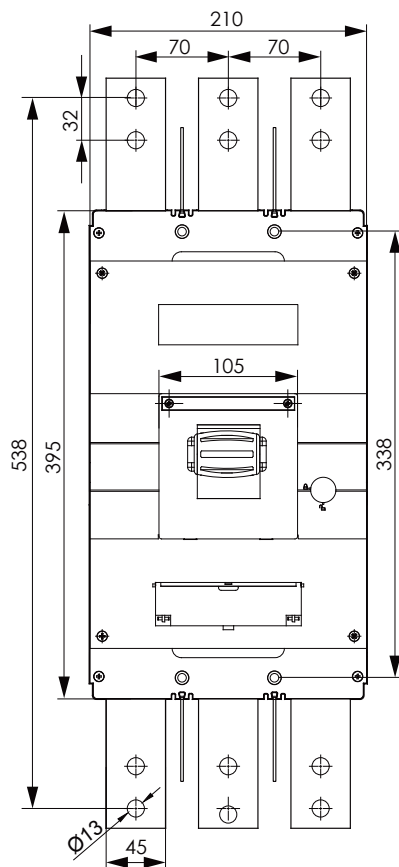


KP 800-F(800A)

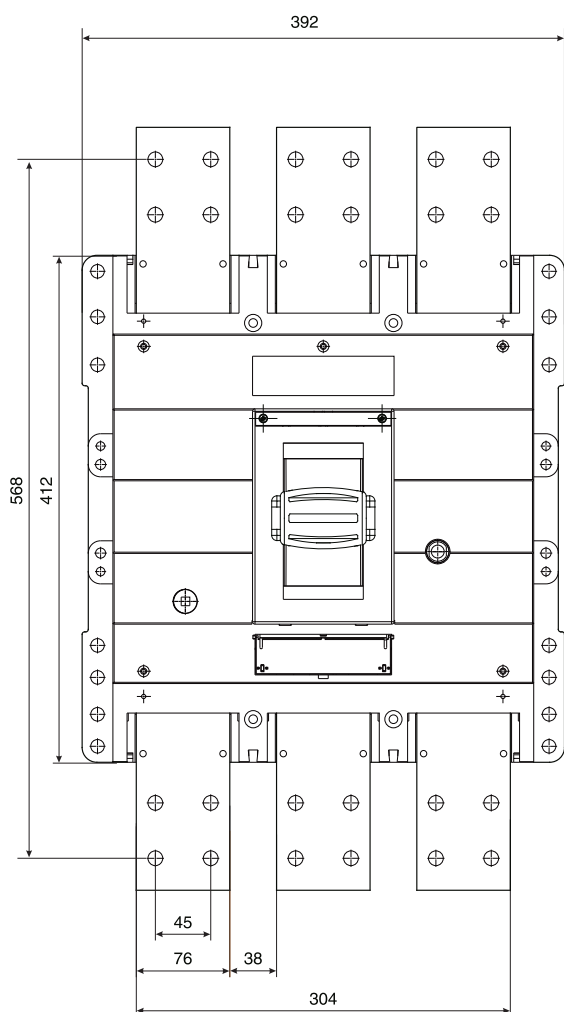
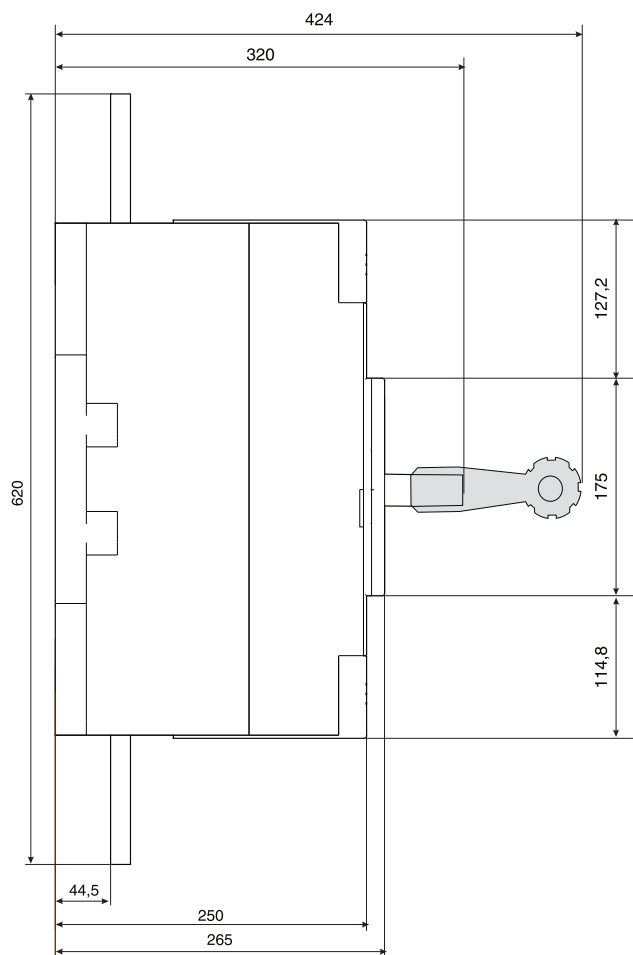
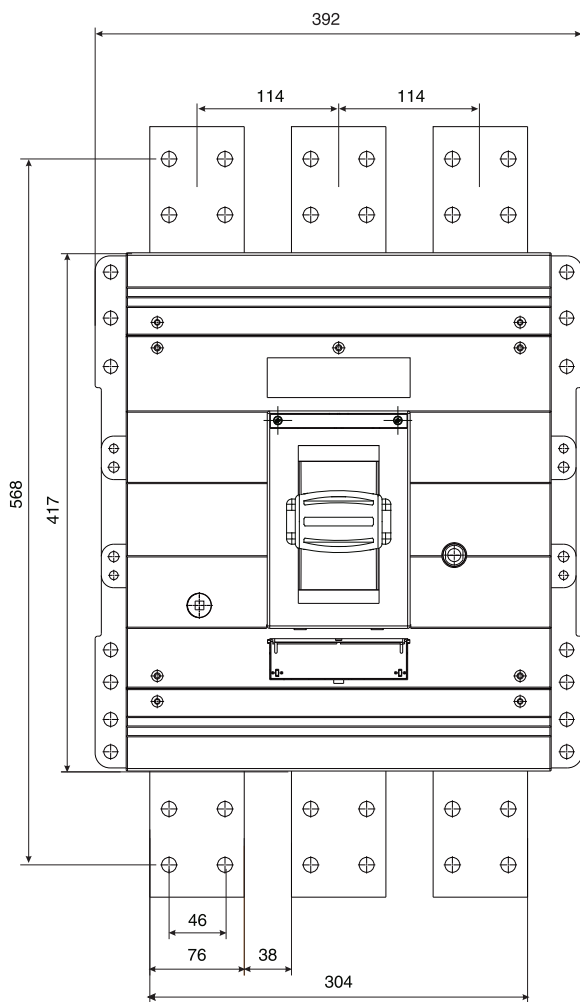


KP 1250-F

6



KP 1600-F



KP 2500-F